

Online Planroom Tips & Tidbits

Maximize your use of the Online Planroom (OPR) with On-Screen Takeoff (OST)

Here are instructions to install this helpful, free Take-Off / Estimating Software

1) From within the OPR, click the "Install Software" link at the far left.



2) Check the box next to the operating system your computer uses.

Software Download Instructions

[Having Problems? Click Here!](#)

Step 1.
To view plans and specifications you must download and install On-Screen Takeoff. Click the image below to download On-Screen Takeoff.

Your Operating System is: [Windows XP / Windows Vista](#)

Choose your Operating System

Your selection will determine the version of software that you will download.

Windows 98 / Windows ME
 Windows 2000
 Windows XP / Windows Vista
 Windows 7



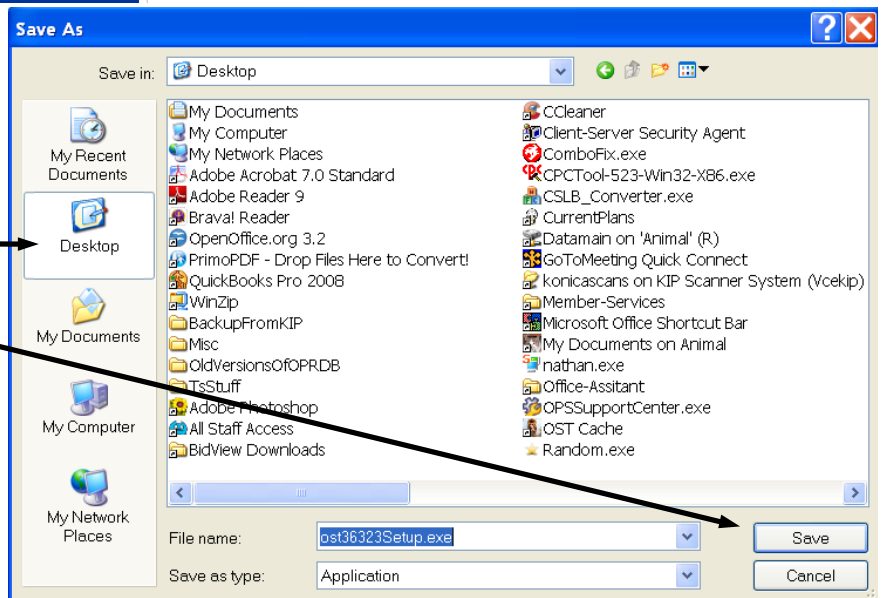
[Click here to download On-Screen Takeoff](#)

3) Click the link to download On-Screen Takeoff.

4) On the next screen, Click the blue "Download Now" link. (as shown here)

ost36323Setup.exe [Download Now](#)

5) At the "File Download" box, click "Save". Choose your "Desktop" and then click "Save".



6) Find the OST Setup icon on your Desktop and double click. Then click "Run" in the next window.



7) During install... click "Next" when asked, fill in your Name/Org info if you care (not required), leave "Complete" checked and click "Install" when prompted. When done, click "Finished". You'll know you've completed the process properly because the green OST 'target' icon will be on your desktop.



NOTE: If you had a prior version of OST, upon first opening, you may see a warning that "You are not licensed... database needs to be updated... sure you want to open". Click "Yes".